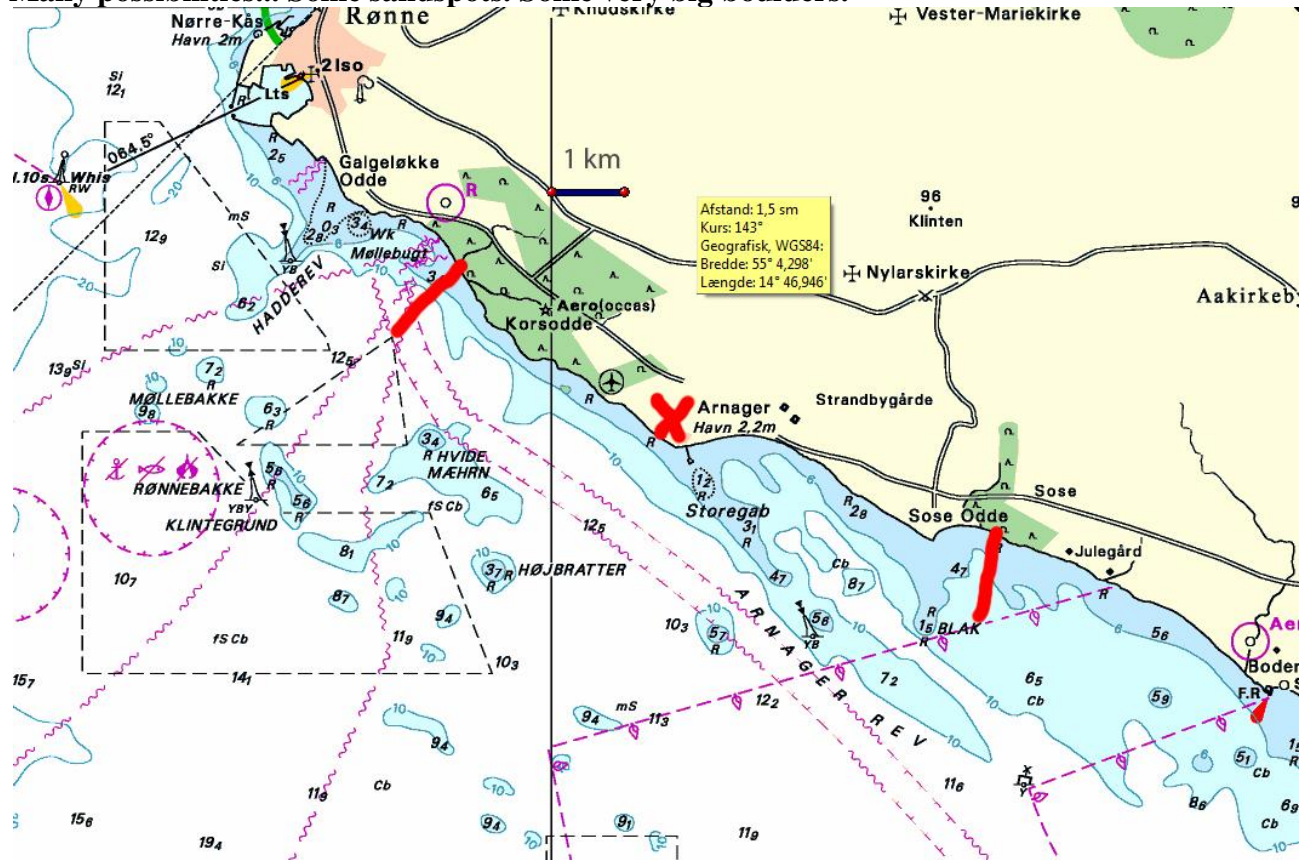




## 2A “Arnager Havn”

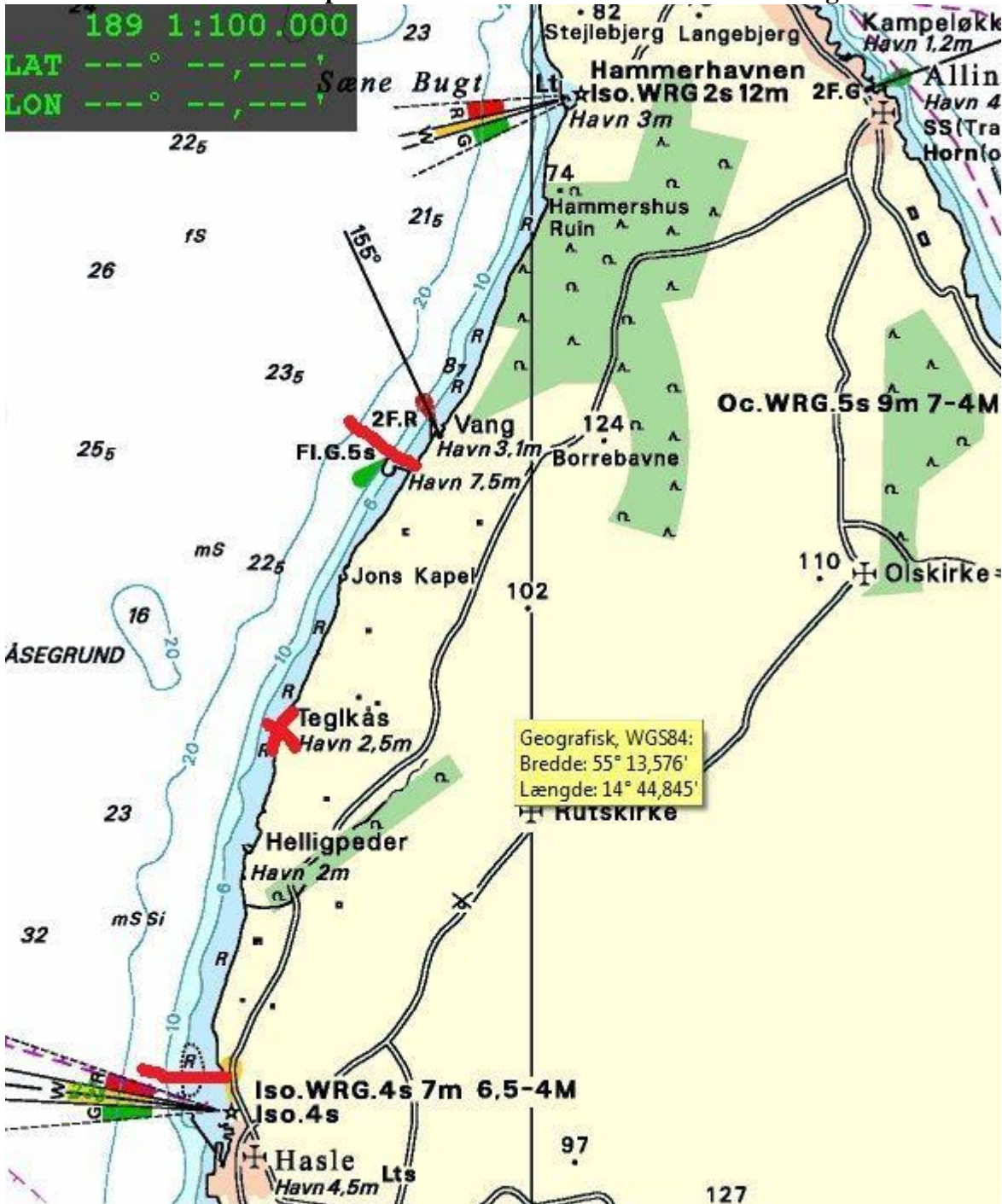
This area was very diverse and had “big” cods, many garfish, flounders and some turbot...

Many possibilities... Some sandspots. Some very big boulders.





2B The start will be in Teglkås. The borders are Vang in the north (Soutside of pier inclusive) and in south: Just before the Lighthouse of Hasle (not inclusive). This area resembles that of Hammerhavnen. Dramatic coastline and deep close to shore. Lots of rocks, boulders and caves – and some fish we hope! This area will be used if there is a strong easternwind.



### 3B "Årsdale"

This very big area is famous for the northern part which is very dramatic and have old pieces of wrecks at 23m and 16m. Cods and Trouts have been spotted here in this area. The Start is marked by the red cross, borders are also marked. This area will be used if there is a strong wind from southwest.

